



**COLORADO
COLLEGE**

ED ROBSON ARENA

COMMUNITY MEETING #4

June 29, 2019

Agenda

- Welcome and Introductions
- Public Process Overview
- Significant Changes to Plan
 - Arena Site Plan
 - Architecture
 - Parking and Traffic
- Update on Project Schedule



COLORADO COLLEGE - ROBSON ARENA

Project Team

- **Colorado College:**

- Lesley Irvine: Vice President and Director of Athletics
- Chris Coulter: Assistant Vice President Facilities Services
- Rick Greene: Senior Project Manager
- Scott Lowenberg: Associate Athletics Director

- **City of Colorado Springs:**

- Bob Cope: Economic Development Officer, City of Colorado Springs

- **Consultant Project Team:**

- Consultant Project Manager: Chris Lieber, N.E.S. Inc.
- Public Engagement: Lisa Bachman, Bachman PR
- Architect: Adam Davidson, JLG Architects
- Traffic and Parking: Cady Dawson, Felsburg Holt & Ullevig
- Civil Engineer: Kyle Campbell, Classic Engineering
- Landscape Architect: Andrea Papierski, N.E.S. Inc.



COLORADO COLLEGE - ROBSON ARENA

Upcoming Public Hearings

- **City Planning Public Meeting:** August or September 2019, Date- TBD
- **Colorado Springs Downtown Review Board:** November 2019
- **Colorado Springs City Council:** December 2019

Project Website & Contact Information:

- Website updated with more about the Robson Arena design and planning process as it progresses.

<http://www.coloradocollege.edu/robsonarena>



COLORADO COLLEGE - ROBSON ARENA

Welcome and Project Goals:

College Campus....

- Elevate Robson Arena as a physical and cultural extension of Colorado Springs and Colorado College
- Establish a gateway to campus that respects the adjacent historic neighborhood
- Connect and consider indoor activities and the outdoor environment
- Be a model of need based use and sustainability for the nation
- Create a Tiger-branded home ice venue advantage



COLORADO COLLEGE - ROBSON ARENA

Entitlement Process

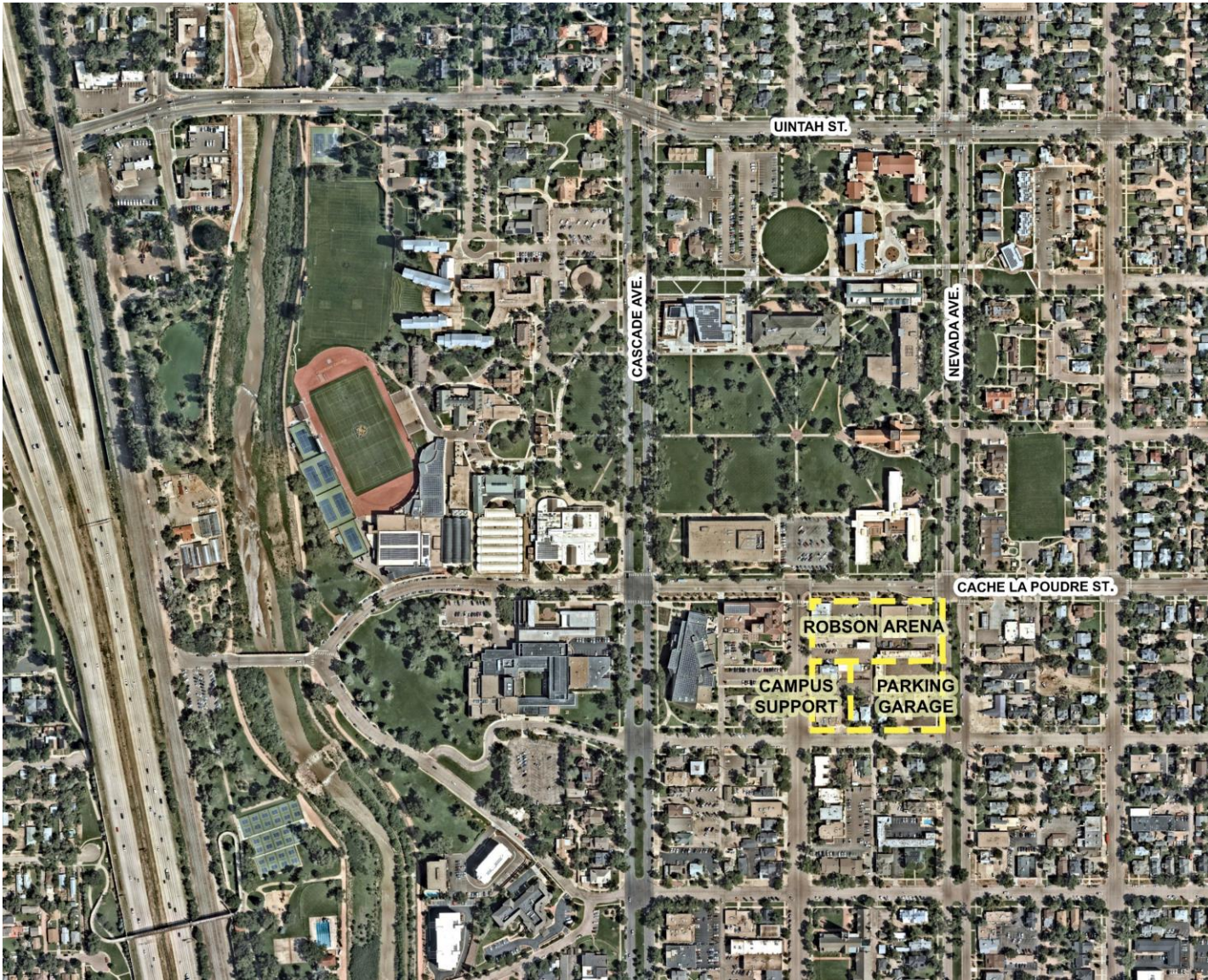
- Robson Arena Entitlement Applications
 - Master Plan Amendment
 - Conditional Use Development Plan
 - Right of Way Vacation
 - Plat

Additional Studies Underway

- Downtown Shuttle Study (Led by City)
- Neighborhood Parking Plan (Led by City)
- Pedestrian Lighting Study (Led by Colorado College)



COLORADO COLLEGE - ROBSON ARENA



COLORADO COLLEGE - ROBSON ARENA

SITE CONTEXT

06/29/19 | JLG 17246 | © 2018 JLG ARCHITECTS



Community Input Shapes Plans

1. The Arena has been relocated to the north side of block.
2. Develop a plan for parking that does not require on street parking in the neighborhood.
3. 400 parking spaces have been added to plan: 300 car parking garage and 100 spaces at El Pomar Sports Center.
4. The College will implement a parking strategy to accommodate enough parking for a sold-out CC Tiger hockey game scenario of up to 3,376 attendees, the largest capacity scenario expected.
 - a) Designate campus lots for Robson events – 391 spaces
 - b) Support multi-modal parking opportunities including shuttles, ride share, biking/walking.
 - c) Expand on-street parking capacity adjacent to arena to accommodate additional parking spaces
 - d) Pursue use of multiple private parking lots close to the campus for Robson Arena events. Agreements with the lot owners will result in approximately 390 additional off-street parking spaces.



COLORADO COLLEGE - ROBSON ARENA



Community Input Shapes Plans

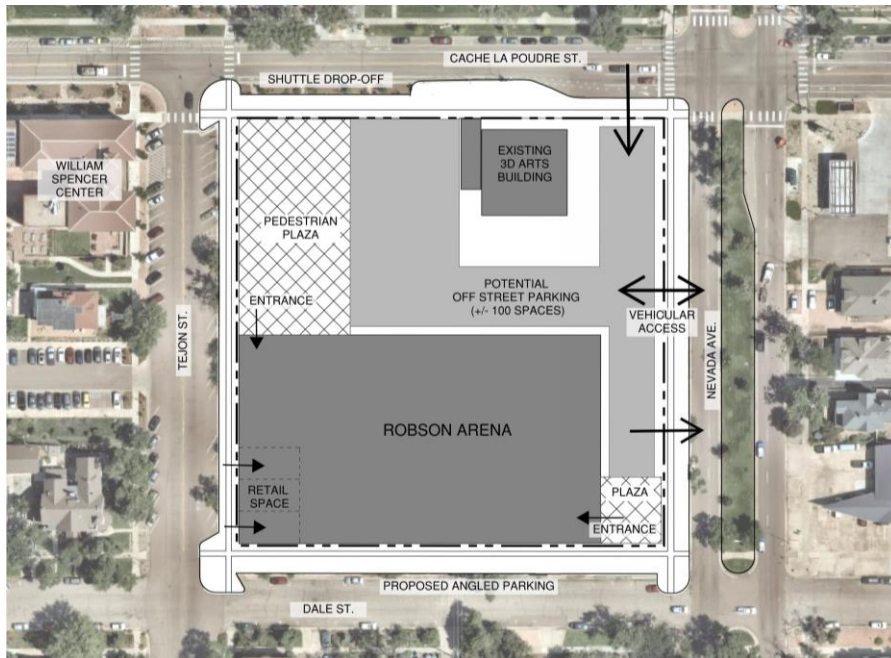
5. Relocate and provide a new 3D Arts Workshop building to accommodate the arena footprint. The college is working to determine a permanent new location for 3D Arts.
6. Amend the Campus Master Plan to relocate the proposed natatorium to the current site of Schlessman Natatorium.
7. Relocate the tennis courts to college property south of the transportation center near the Van Briggie/Facilities Services building on Glen Avenue.
8. Relocate the proposed arena service entrance to Dale Street to improve streetscape along Nevada Avenue.
9. Revise and refine the exterior materials and elevations for the Arena to better respond to campus and neighborhood context.
10. Revise and refine the landscape and streetscape to better fit within the campus and neighborhood context.



COLORADO COLLEGE - ROBSON ARENA



Where We Started vs. Current Plan



COLORADO COLLEGE - ROBSON ARENA





COLORADO COLLEGE - ROBSON ARENA

SITE PLAN

06/29/19 | JLG 17246 | © 2018 JLG ARCHITECTS



1. Tell a story of correlation with campus, in touch with the outdoor nature of CC, with elements capturing the eclectic architectural nature of CC. The entry needs to be modern and simple communicating a new experience.
2. Stone/natural elements to connect Robson with both hockey and students. Building features to help Robson feel 'comfortable' for the students but also 'dynamic' for hockey. Elements taking inspiration from existing campus buildings like Shove, Palmer, Cutler.
3. Provide a sense of scale that works better with campus and the surrounding neighborhood. Avoid large expanses of nothingness (blank walls) and promote activated areas where people want to be.
4. Provide a parking and traffic solution that respects the local neighborhood but also works for the campus and arena venue.

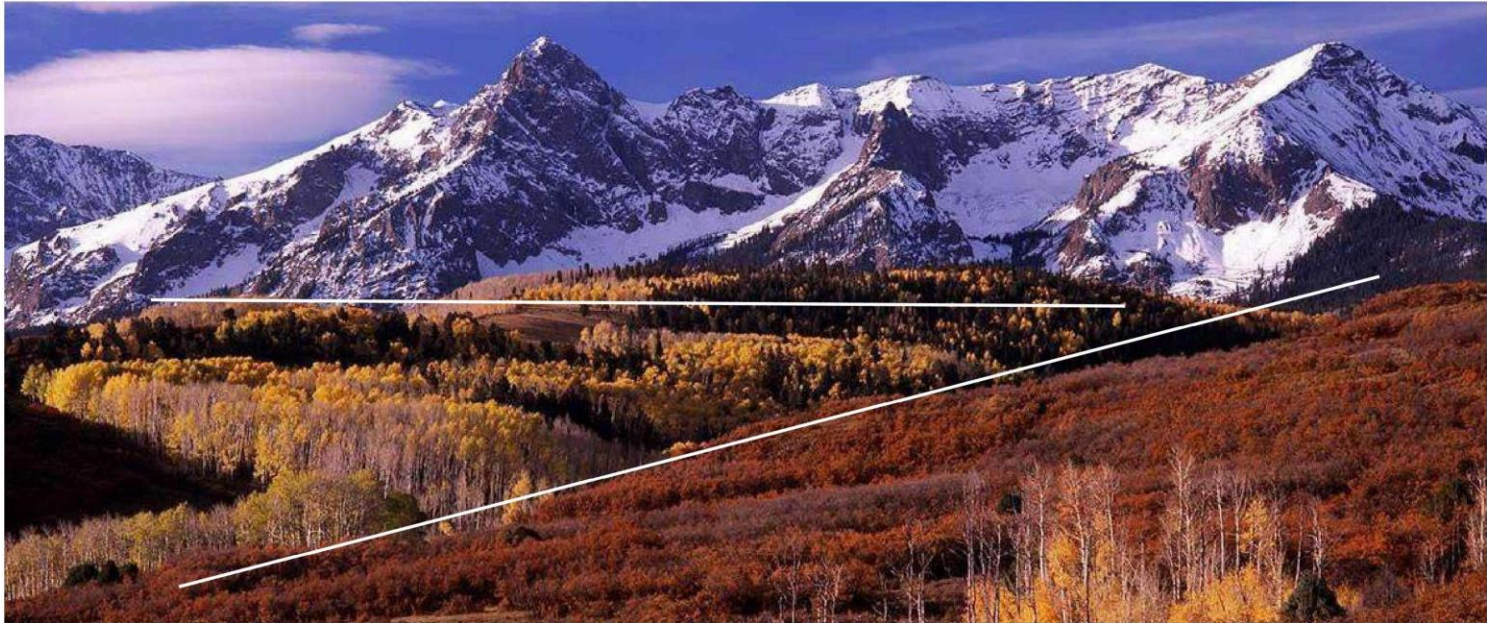


EDWARD J. ROBSON ARENA

WHAT WE HEARD

06/29/19 | JLG 17246 | © 2019 JLG ARCHITECTS





"Create a sense of place that allows hockey and athletics to compete at the national level, but also serves the needs of the broader CC and CS community."



EDWARD J. ROBSON ARENA

DESIGN NARRATIVE

06/29/19 | JLG 17246 | © 2019 JLG ARCHITECTS



DESIGN FOR LIFE



EDWARD J. ROBSON ARENA

TEJON AND CACHE LA POUDE STREET

06/29/19 | JLG 17246 | © 2019 JLG ARCHITECTS



DESIGN FOR LIFE



© 2019 JLG ARCHITECTS



EDWARD J. ROBSON ARENA

TEJON STREET

06/29/19 | JLG 17246 | © 2019 JLG ARCHITECTS



DESIGN FOR LIFE



© 2019 JLG ARCHITECTS



EDWARD J. ROBSON ARENA

NEVADA AND DALE STREET

06/29/19 | JLG 17246 | © 2019 JLG ARCHITECTS



DESIGN FOR LIFE



© 2019 JLG ARCHITECTS



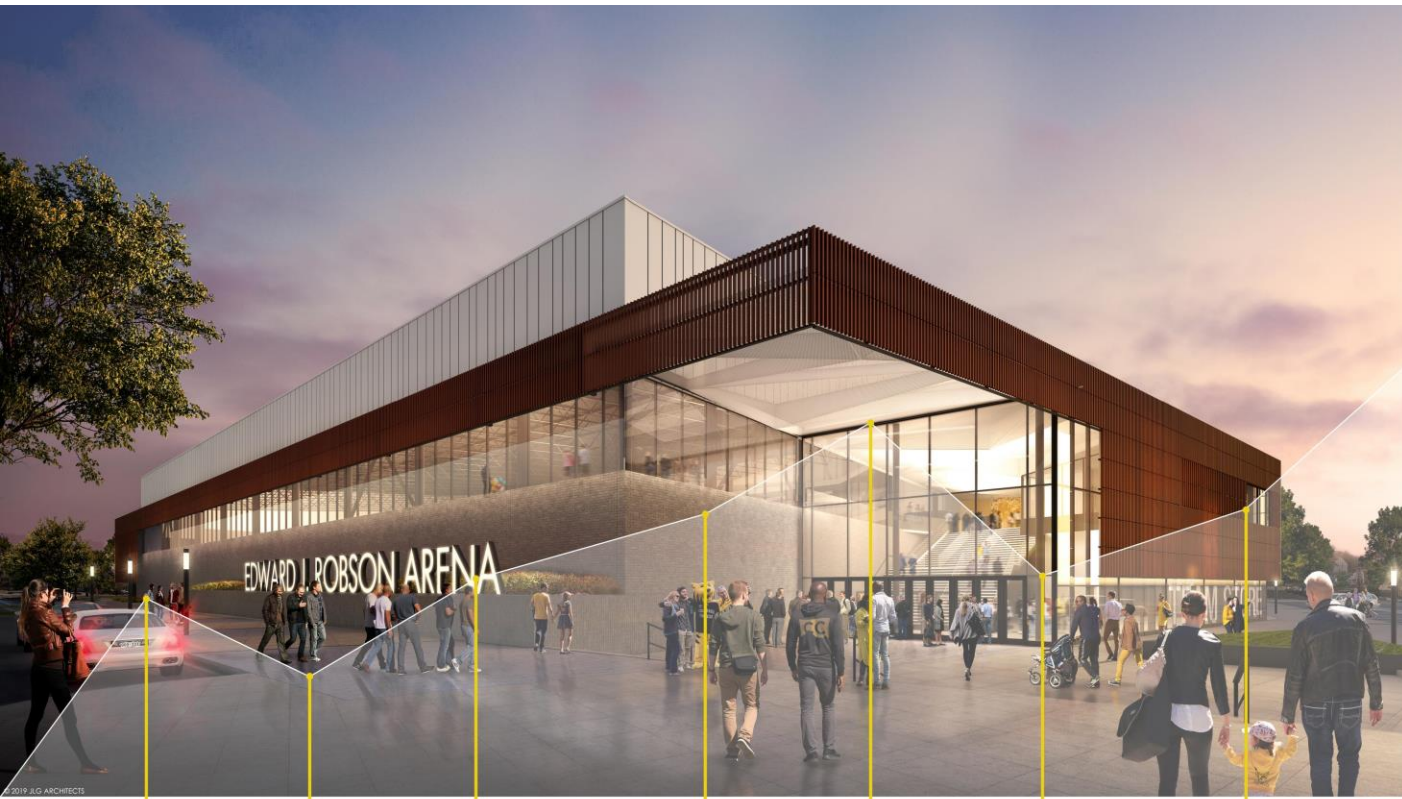
EDWARD J. ROBSON ARENA

NEVADA AND CACHE LA POUDE STREET

06/29/19 | JLG 17246 | © 2019 JLG ARCHITECTS



DESIGN FOR LIFE



Native Landscaping



Colored Concrete



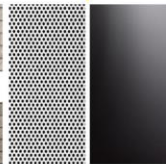
Illuminated Signage



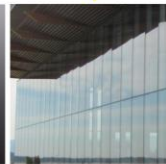
Brick: Color 1



Brick: Color 2
Size: Norman Unit
Texture: Smooth



Metal Accents
Type: Perf/Solid
Color: White/Black



Glazing
Type: Silicone Glazed
Color: Clear



Terracotta Screen
Unit: 2x4, Vertical
Color: Salmon



Insulated Metal Panel
Size: Varies, Vertical
Color: Bone White



Stone
Indiana Limestone full color blend, smooth

SITE MATERIALS

BUILDING MATERIALS

ALTERNATE MATERIAL



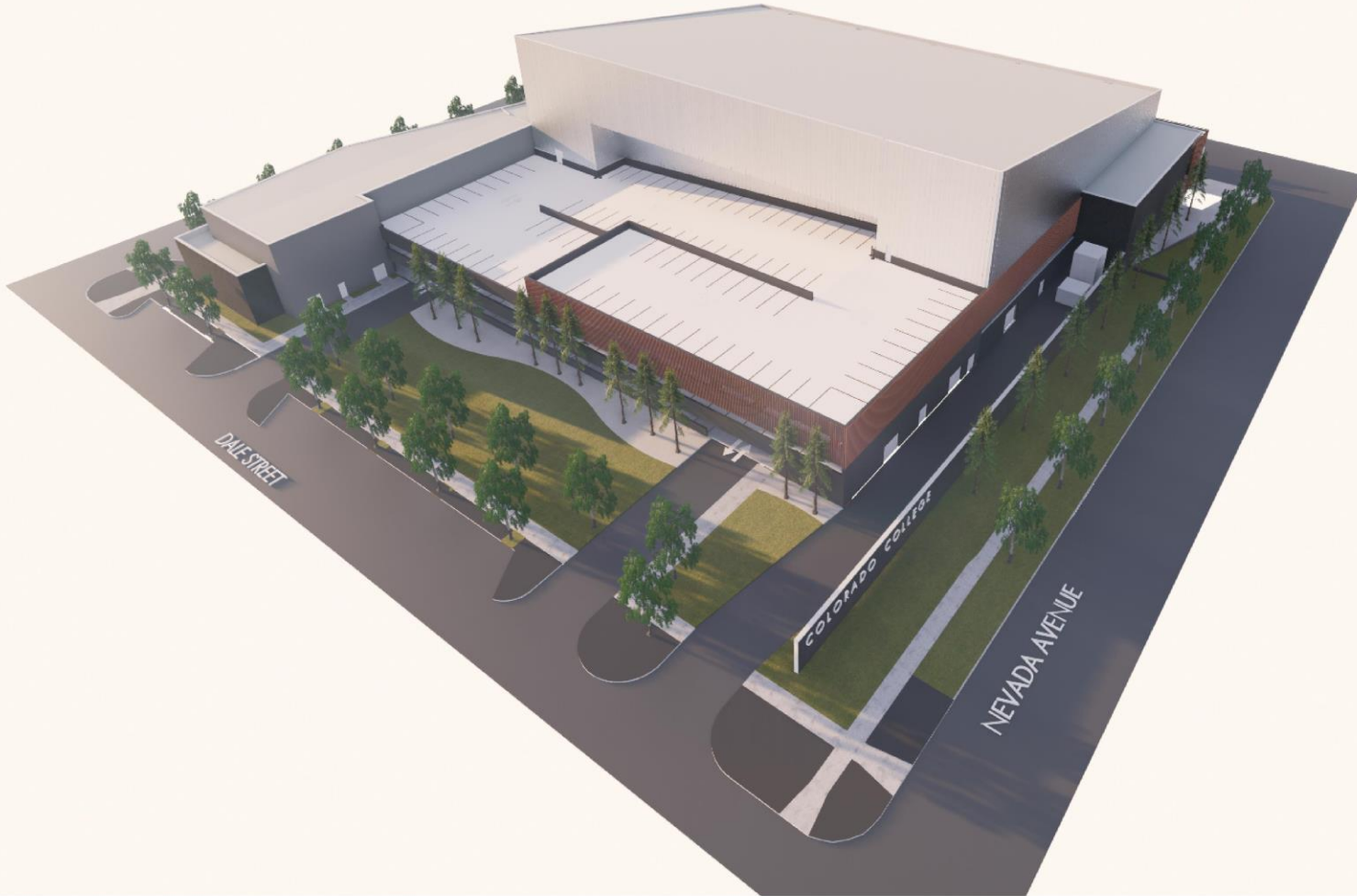
EDWARD J. ROBSON ARENA

EXTERIOR MATERIALS

06/29/19 | JLG 17246 | © 2019 JLG ARCHITECTS



DESIGN FOR LIFE



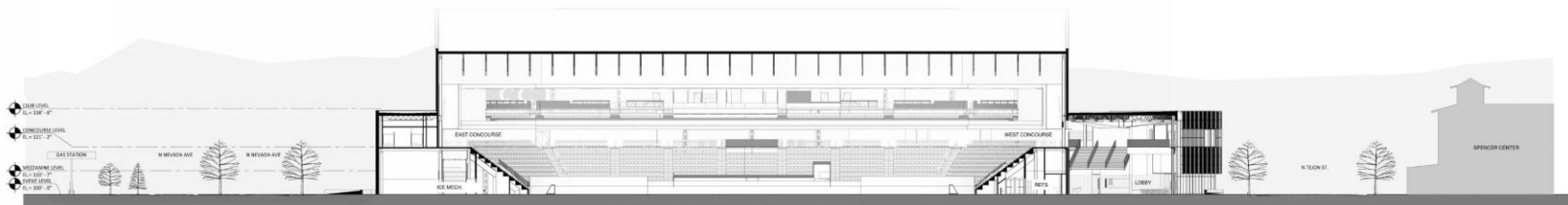
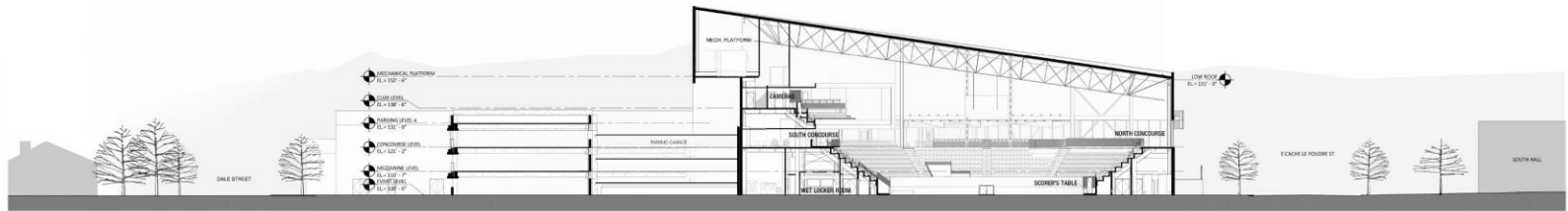
EDWARD J. ROBSON ARENA

PARKING RAMP SCREENING CONCEPT

06/29/19 | JLG 17246 | © 2019 JLG ARCHITECTS



DESIGN FOR LIFE



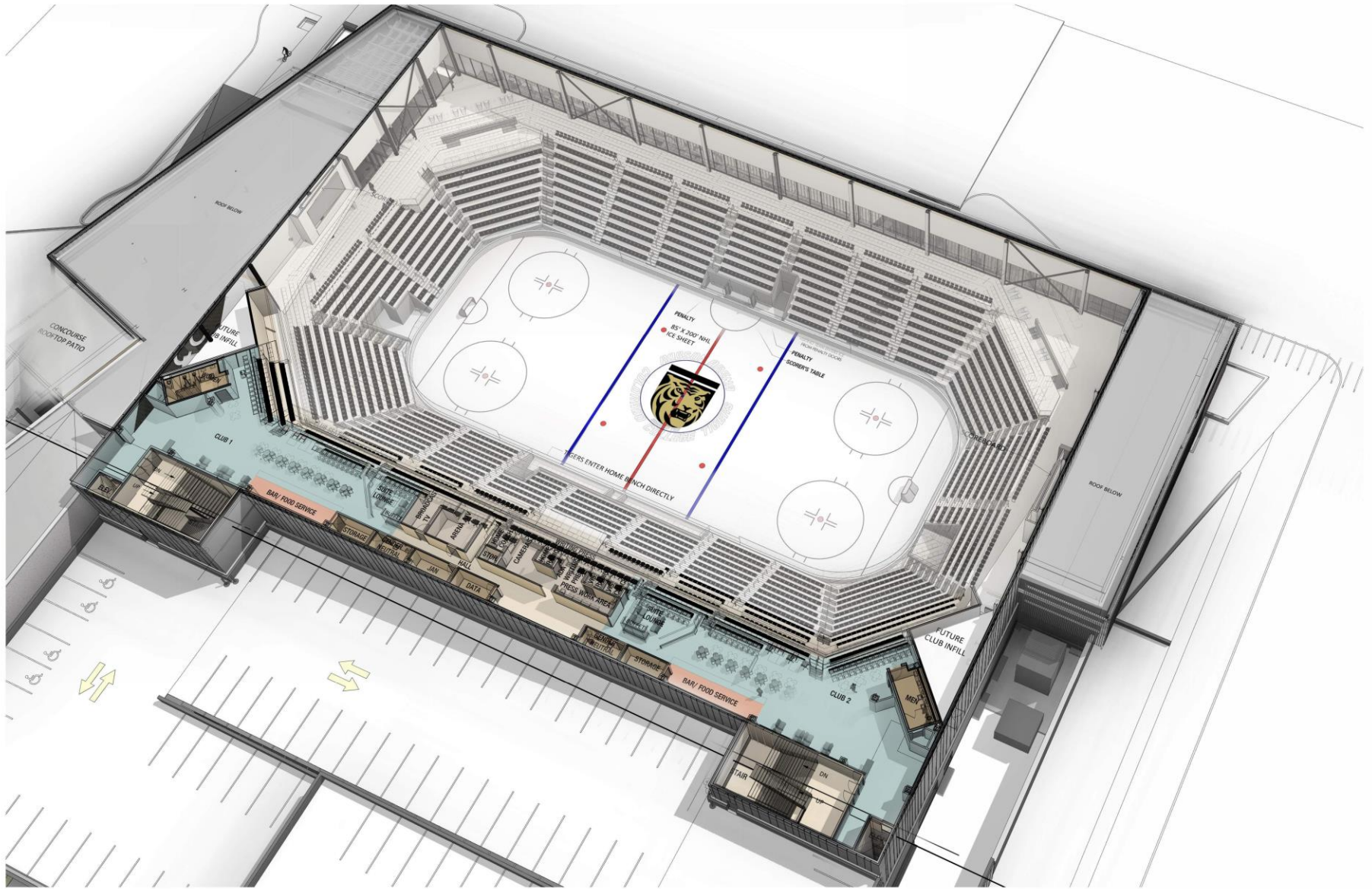
EDWARD J. ROBSON ARENA

SITE SECTIONS

06/29/19 | JLG 17246 | © 2019 JLG ARCHITECTS



DESIGN FOR LIFE



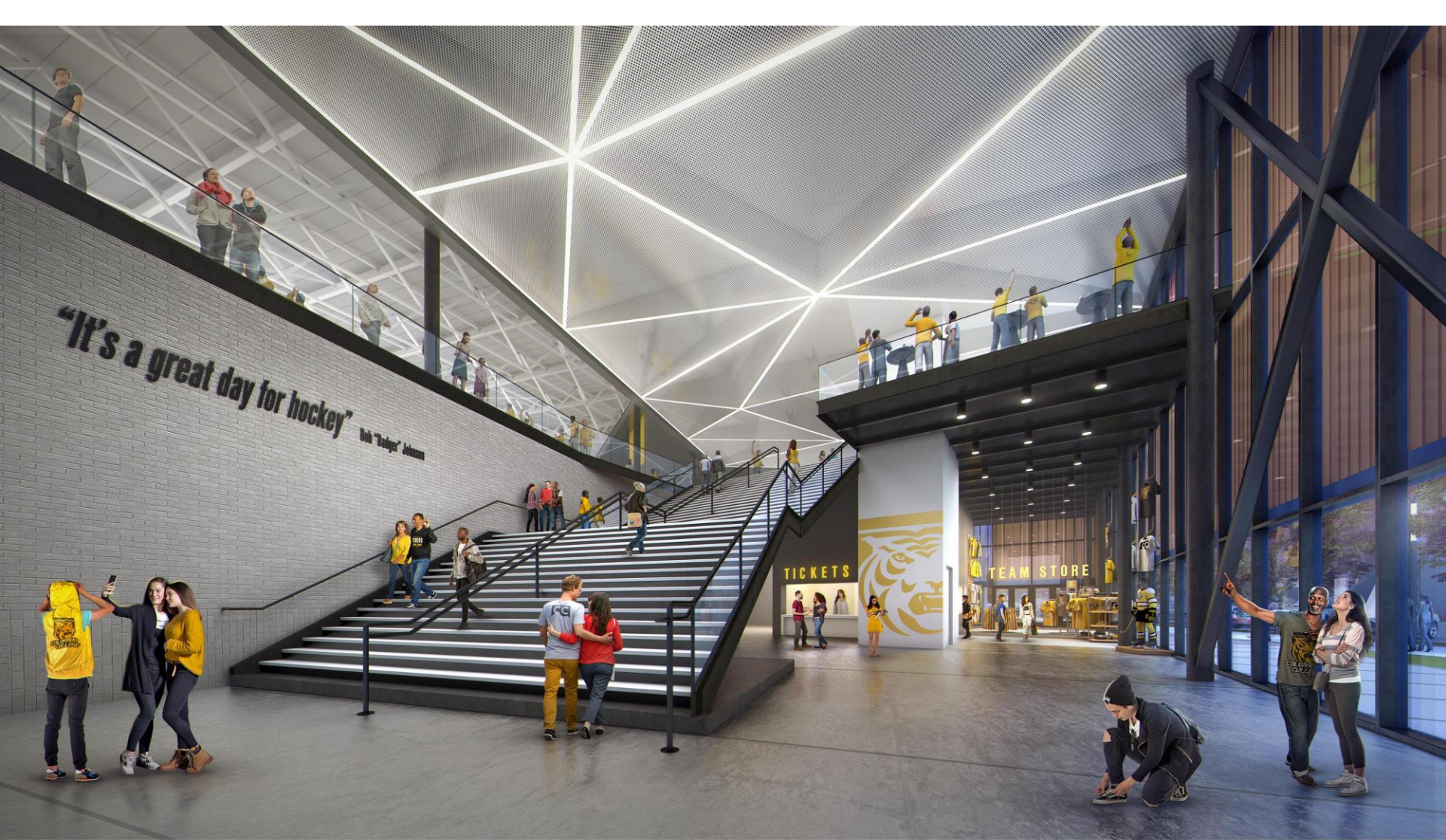
EDWARD J. ROBSON ARENA

CLUB LEVEL - AXON

06/29/19 | JLG 17246 | © 2019 JLG ARCHITECTS



DESIGN FOR LIFE



EDWARD J. ROBSON ARENA

MAIN ENTRANCE AND LOBBY

06/29/19 | JLG 17246 | © 2019 JLG ARCHITECTS



DESIGN FOR LIFE



EDWARD J. ROBSON ARENA

ARENA BOWL

06/29/19 | JLG 17246 | © 2019 JLG ARCHITECTS



DESIGN FOR LIFE



EDWARD J. ROBSON ARENA

CONCOURSE AND CLUB LEVEL

06/29/19 | JLG 17246 | © 2019 JLG ARCHITECTS



DESIGN FOR LIFE



EDWARD J. ROBSON ARENA

ARENA BOWL

06/29/19 | JLG 17246 | © 2019 JLG ARCHITECTS



DESIGN FOR LIFE

CONCEPT STATEMENT

ICE FRACTALS

SKATING OVER FROZEN WATER, CREATING FRACTAL GEOMETRY ON THE SURFACE

THE DESIGN WILL BE GROUNDED IN LINEAR ARCHITECTURAL ELEMENTS FOR VISUAL STABILITY, COMPLEMENTED WITH A VARIETY OF GEOMETRIC PATTERNS. THE MODERN RICHNESS WILL SHOWCASE SHARP LINES, BOLD COLORS AND DEEP CONTRASTS SUCH AS BLACK, CHARCOAL, AND YELLOW. COUPLED WITH ORGANIC MATERIAL WILL HELP CREATE A SENSE OF PLACE FOR THE VISITOR.

AN ENTRY THROUGH RICHER/SATURATED FINISHES MOVES YOU TOWARD THE CENTER LIGHTNESS OF THE ARENA. THIS CLEAN BUT RESTRAINED DESIGN WILL OFFER THE USER A TIMELESS ENVIRONMENT THAT WILL HIGHLIGHT THE HOCKEY TEAM BUT ALSO INVITE THE COMMUNITY TO PARTICIPATE IN A NUMBER OF ACTIVITIES IN ADJACENT SPACES.



EDWARD J. ROBSON ARENA

INTERIOR CONCEPT

06/29/19 | JLG 17246 | © 2019 JLG ARCHITECTS

 DLR Group



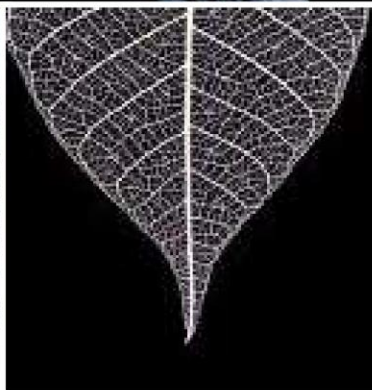
DESIGN FOR LIFE



CONTRAST



SLEEK



LINEAR



BOLD



EDWARD J. ROBSON ARENA

INTERIOR CONCEPT

06/29/19 | JLG 17246 | © 2019 JLG ARCHITECTS



DESIGN FOR LIFE

INSPIRATION



EDWARD J. ROBSON ARENA

INTERIOR INSPIRATION

06/29/19 | JLG 17246 | © 2019 JLG ARCHITECTS

DLR Group



DESIGN FOR LIFE

PRO-SHOP - INSPIRATION



EDWARD J. ROBSON ARENA

INTERIOR INSPIRATION

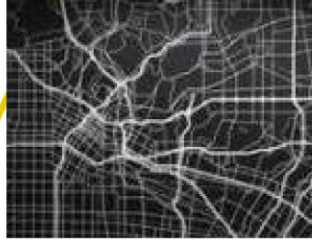
06/29/19 | JLG 17246 | © 2019 JLG ARCHITECTS

DLR Group



DESIGN FOR LIFE

MULTI PURPOSE SPACE - INSPIRATION



EDWARD J. ROBSON ARENA

INTERIOR INSPIRATION

06/29/19 | JLG 17246 | © 2019 JLG ARCHITECTS

 DLR Group



DESIGN FOR LIFE

CLUB DESIGN - INSPIRATION



EDWARD J. ROBSON ARENA

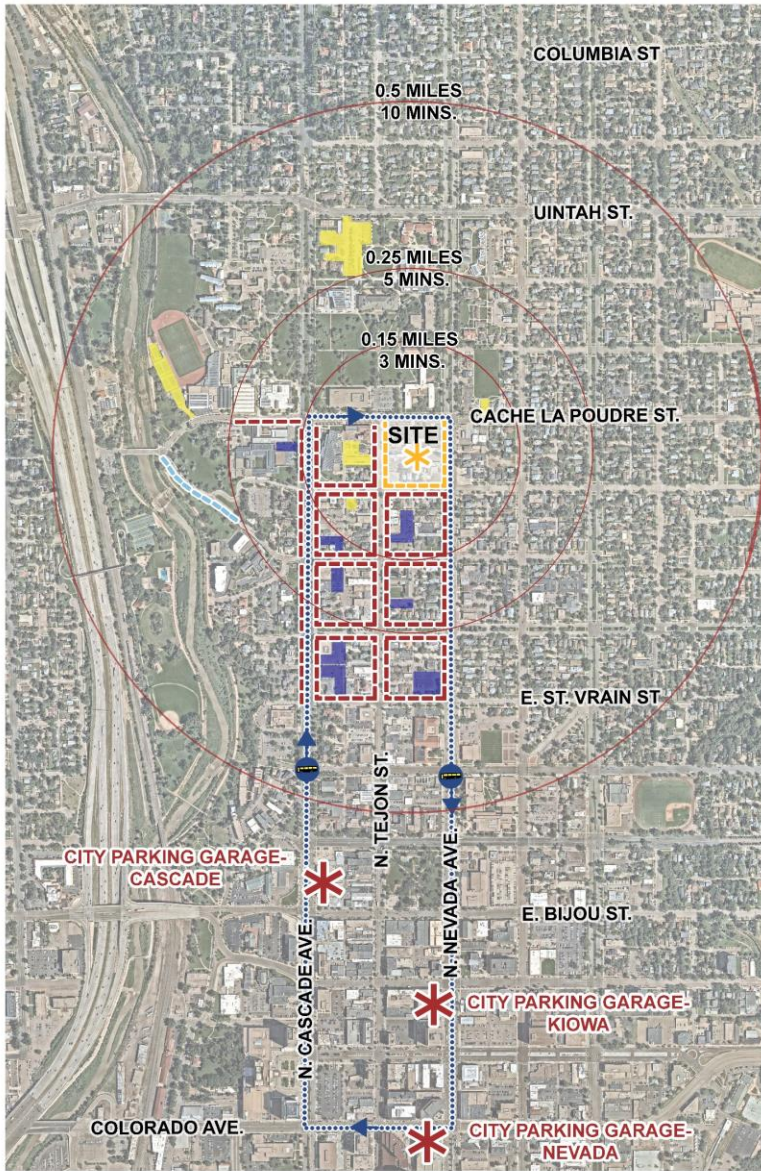
INTERIOR INSPIRATION

06/29/19 | JLG 17246 | © 2019 JLG ARCHITECTS

DLR Group



DESIGN FOR LIFE



Parking Demand: 1,114 spaces

Proposed Spaces:

- Parking Garage: ~300+ spaces
- Campus Lots: ~291 spaces
- Proposed Campus Lots: ~100 spaces
- Privately Owned Lots: ~391 spaces
- Site Frontage Parking: ~ 46 spaces

Total: 1,128 spaces

Supplemental Spaces:

- Downtown Garages: ~ 170 spaces
- Existing On-Street: ~ 287 spaces

Total:

~1,589/1,158 spaces



COLORADO COLLEGE - ROBSON ARENA

Parking Plan

06/29/19 | JLG 17246 | © 2018 JLG ARCHITECTS



Project Timeline



COLORADO COLLEGE - ROBSON ARENA

Next City Review Process Steps

- **Development Application Submittal** to the City of Colorado Springs
– End of July
- **City Planning Public Meeting:** August or September 2019, Date- TBD
- **Colorado Springs Downtown Review Board:** November 2019
- **Colorado Springs City Council:** December 2019
- Website: <http://www.coloradocollege.edu/robsonarena>



COLORADO COLLEGE - ROBSON ARENA

Thank you!



COLORADO COLLEGE - ROBSON ARENA